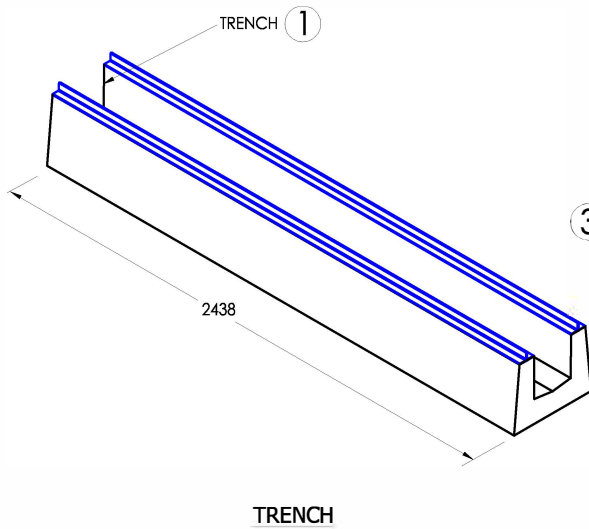
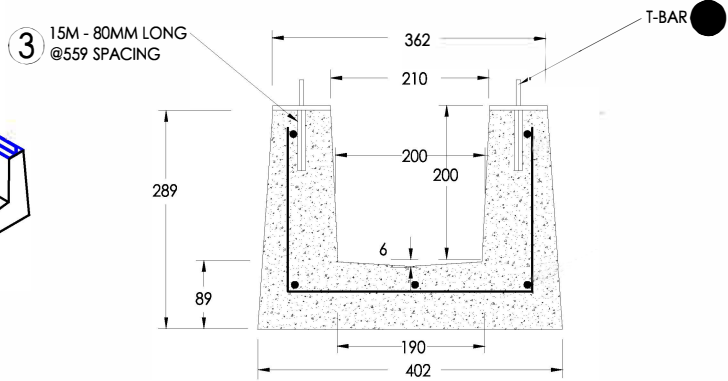


WELDED T SECTION



TRENCH



SECTION VIEW 1:10

Specification and General Notes:

1. Concrete design to CSA A23.4
2. Concrete testing to ASTM C497/CSA 23.1 & 2-09.
3. Min. concrete compressive strength 30 MPa with Max. W/C ratio of 0.5.
4. Concrete cover to be Min.25mm.
5. All dimensions to be millimeter.
6. Manufacturing tolerance to be +/- 5mm.
7. Concrete Exposure Class to be A-3.
8. Min. Stripping Strength to be 15MPa.
9. All Form Finish to be Standard Grade.
10. All Unformed Finish to be Steel Trowelled Finish or Wood Float Finish.
11. Lifting cable and accessories to meet the strength requirement in lifting detail.
12. Galvanizing to current version of CAN/CSA G164M



Description:

Trench 200 H20

Trench 200 H20 #902

Project:

Drawn :

Y.W

Date :

01/19/2016

Catalog No.

TR-H20-200

Approved :

V.W.

Load Rating:

H20

Dwg. No.

TR-H20-200-1

Rev. No.

B

Scale :

As Shown

This drawing is the property of the Diamond Precast Concrete. All information contained herein is confidential and may not be used in whole or in part without written permission from the owner

Sheet No.

1 OF 1