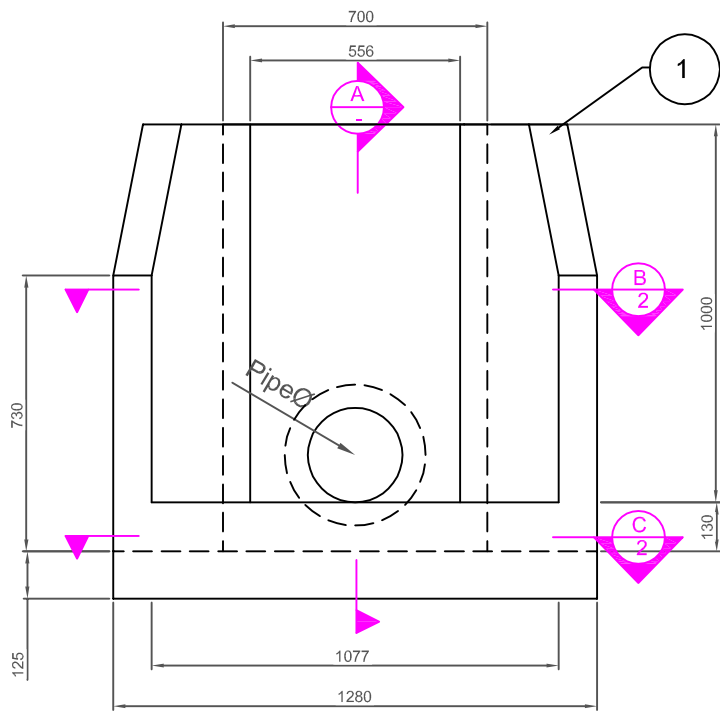
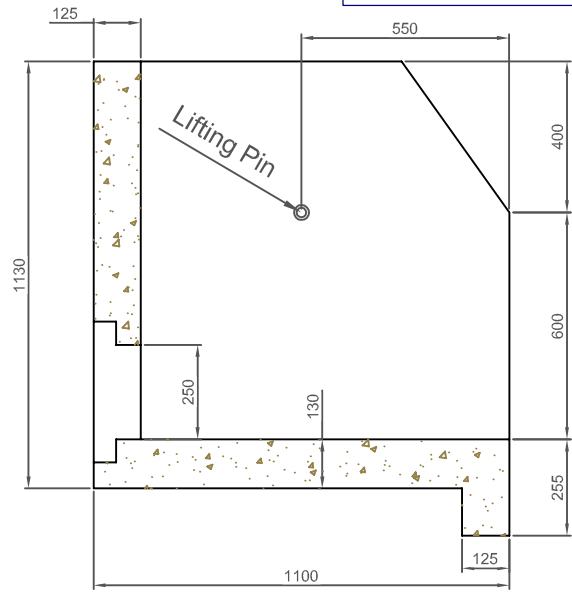


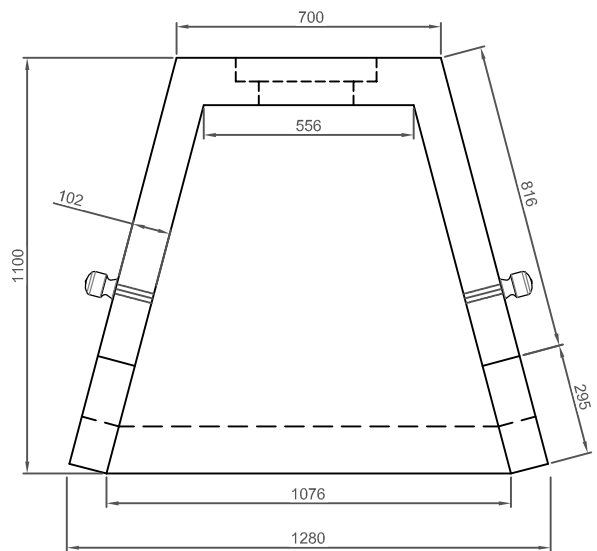
# HWII -250



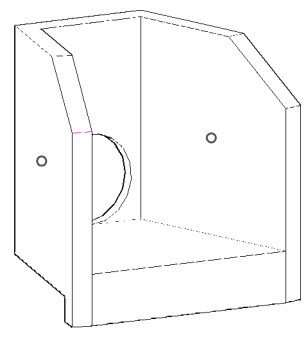
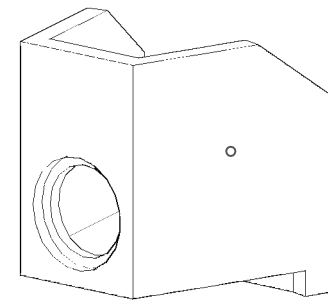
**FORNT VIEW 1:20**



**SECTION A-A 1:20**



**PLAN VIEW 1:20**



**3D VIEW**

**Specification and General Notes:**

1. Manhole design/manufacture to & CSA A23.4 Specification.
2. Concrete testing to current version of ASTM C497/CSA 23.1 & 2.
3. Min. concrete compressive strength 30 MPa with Max. W/C ratio of 0.5.
4. Concrete cover to be Min. 25mm.
5. All dimensions to be millimeter.
6. Manufacturing tolerance to be +/- 5mm.
7. Concrete Exposure Class to be A-3.
8. Min. Stripping Strength to be 15MPa.
9. All Form Finish to be Standard Grade.
10. All Unformed Finish to be Steel Trowelled Finish or Wood Float Finish.



Description:

**TYPE II HEADWALL**

TYPE II HEADWALL# 2266

Project:

Drawn :  
D.L.

Date :  
30/07/2018

Catalog No.

**HWII-250**

Aproved :  
V.W.

Load Rating:  
N/A

Dwg. No.

**HWII-250-1**

Rev. No,  
A

Scale :  
As Shown

Sheet No.

1 OF 2

This drawing is the property of the Diamond Precast Concrete. All information contained herein is confidential and may not be used in whole or in part without written permission from the owner